

Access

[Train]

10 minute walk from JR/Tokyo Metro Meguro Station
7 minute walk from Tokyu Line Fudomae Station.

[Bus]

A short walk from "Fudosen Sando" bus stop of Route Shibuya 41 bound for Oimachi Station of Tokyu Bus.
(Please take Tokyu Bus from the south exit of Shibuya Station or from Tokyu Toyoko Line Nakameguro Station.)

[IMAGE STUDIO 109, INC

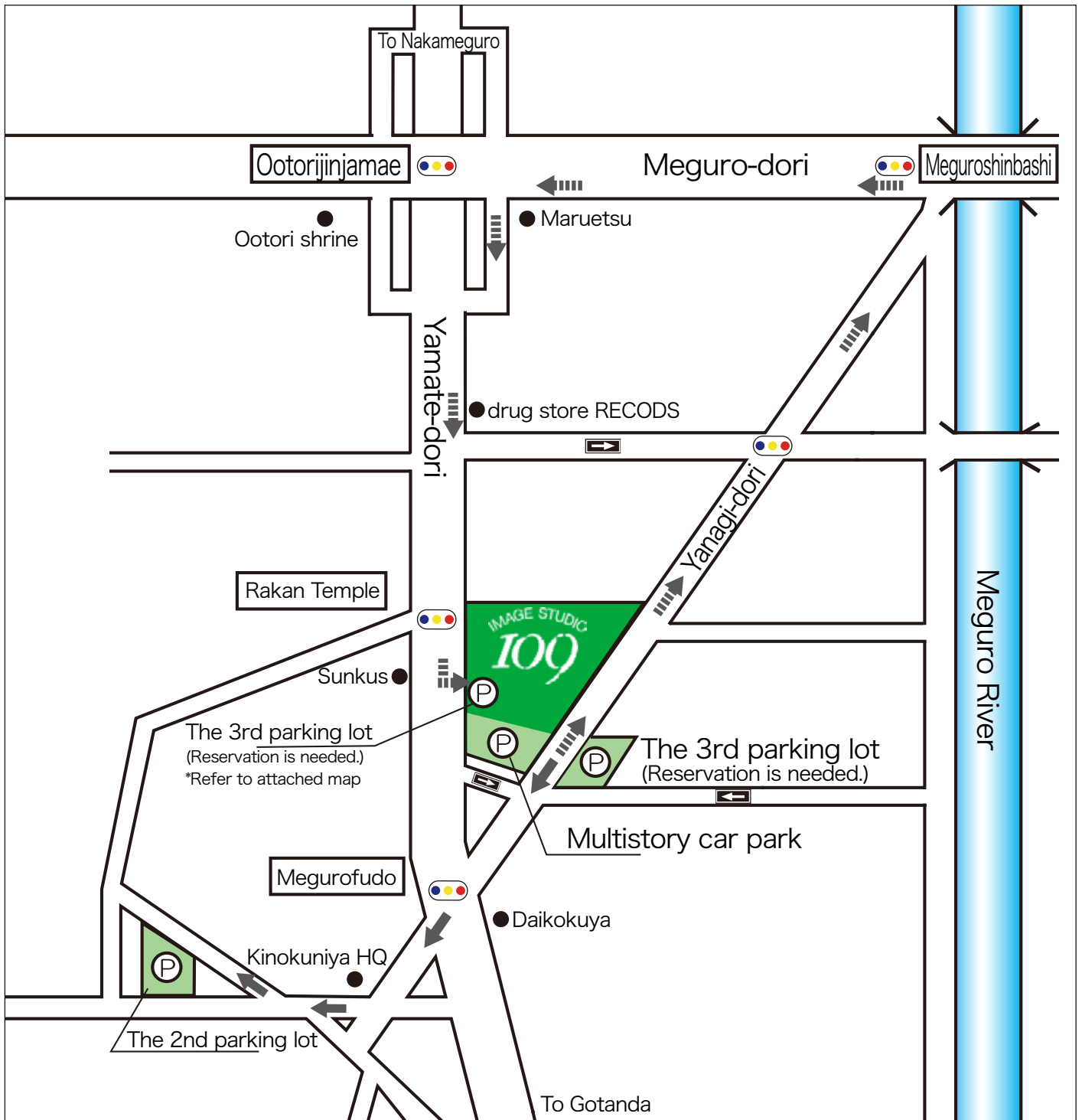
2-24-12, Shimomeguro, Meguro-ku, Tokyo, 153-0064 (MEGURO CUE building)

□ Studio department
TEL.03-3491-1109 FAX.03-3491-1089

□ Post production department
TEL.03-3779-0109 FAX.03-3779-2054

□ CCTV department
TEL.03-5436-9109 FAX.03-3494-8871

□ General affairs department
TEL.03-3491-1090 FAX.03-3491-1072



[About parking lots]

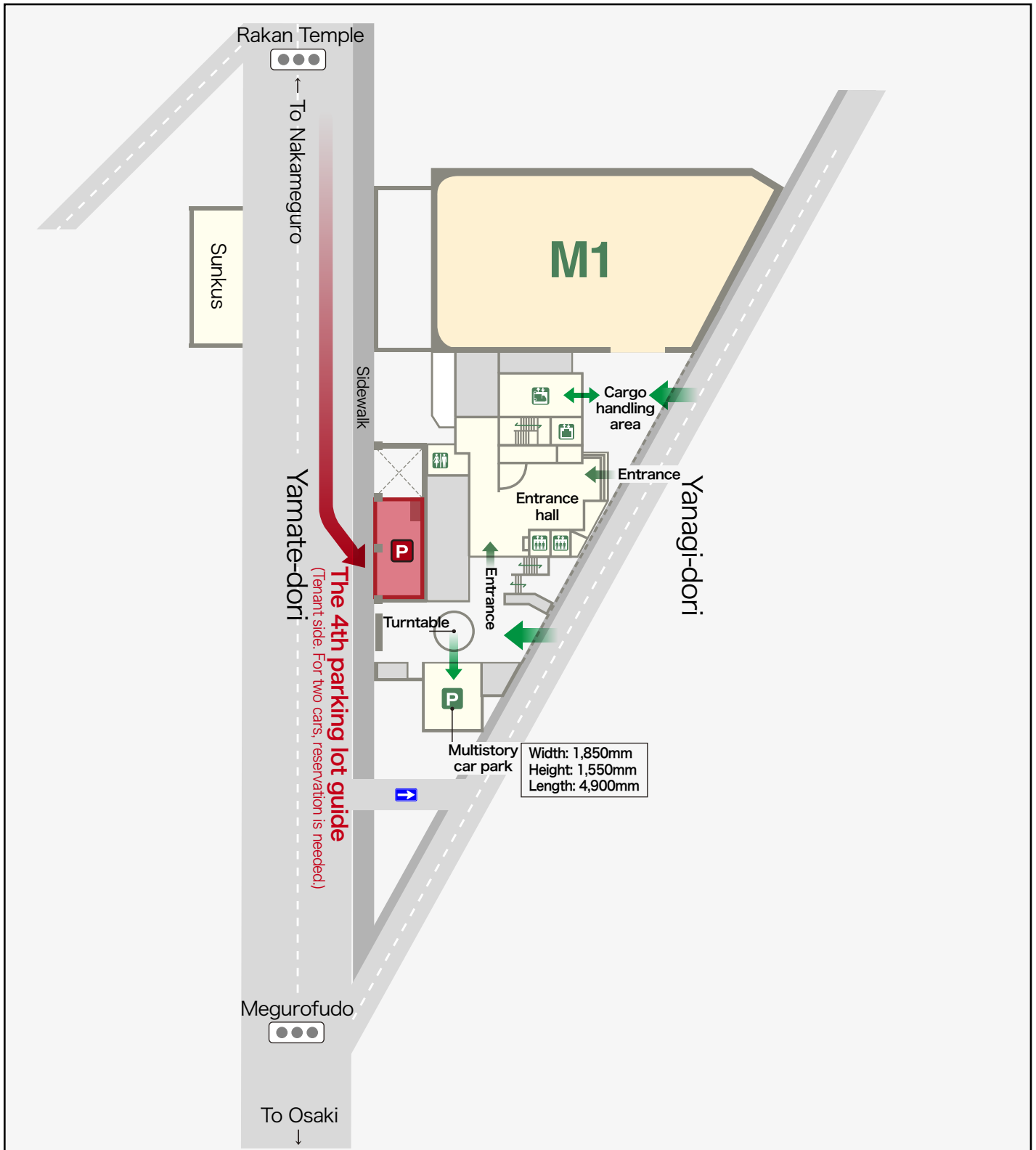
If all the parking lots shown above are full, please use other parking facilities nearby.

[The 2nd parking lot]

Please follow the solid arrows on the map. After receiving a parking slip from the studio staff or at the front, pass Megurofudo intersection and turn right at Kinokuniya HQ, then go right (narrower street) at the fork and you'll find the parking lot at the left. Place the parking slip on the dashboard when parking.

[The 4th parking lot (reservation needed)]

Please follow the thick dotted arrows on the map. After calling the guard at the multistory car park, go through Yanagidori and Yamatedori, and enter the car park from Yamatedori. DO NOT go through the multistory car park when going to the 4th parking lot as it conflicts with the Road Traffic Law.



Access

Please enter from Yamatedori (from inner loop Nakameguro). Just beyond Rakanji Intersection, before Megurofudo Intersection. Be careful when parking as traffic is busy.

[IMAGE STUDIO 109, INC