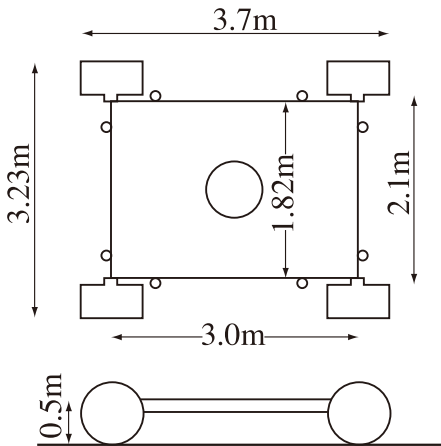
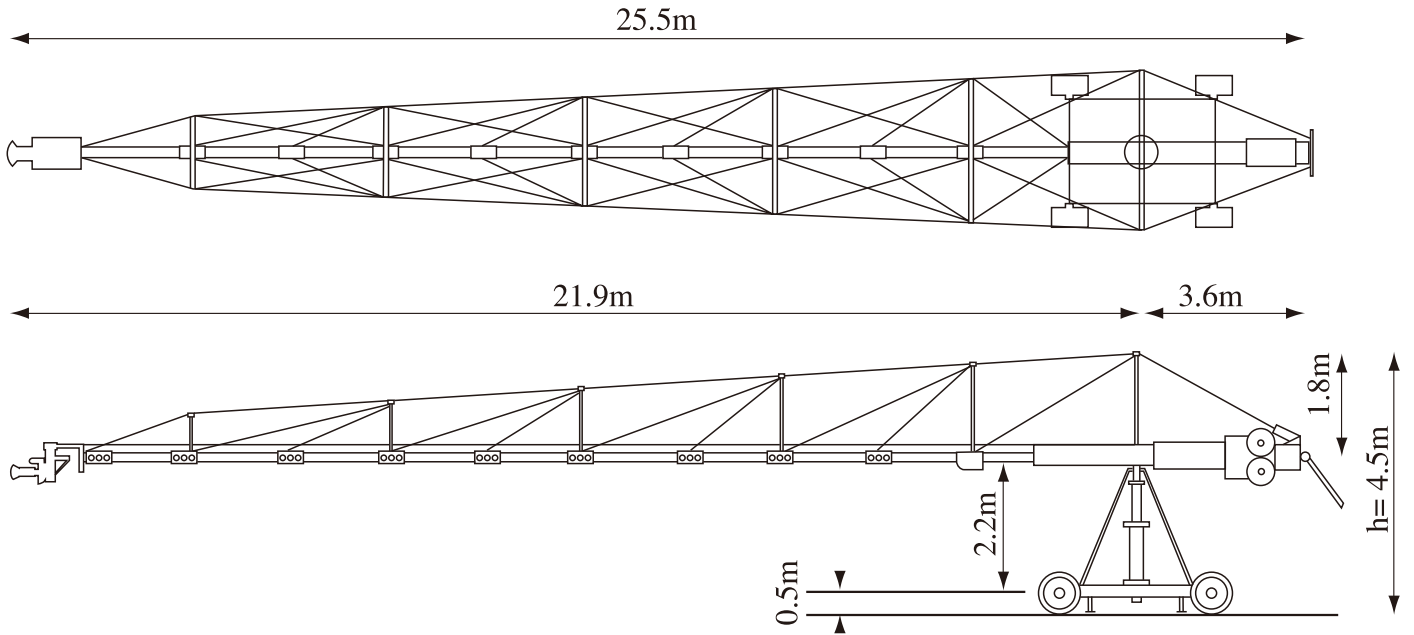


AKELA CRANE

Arm reach Scale Information



3 types of arm reach

You can choose Akela Crane's arm reach from 72ft, 58ft, 46ft.

Arm reach	21.9m(72ft)	17.6m(58ft)	13.7m(45ft)
Height under lens	18.4m	14.5m	10.6m
Arm length	25.2m	21.0m	17.1m
Head max. load	90kg	113kg	136kg

Booking and inquiries: tel.044-935-0567 fax.044-935-0568

Here is the mini Scorpio **MINI HEAD SB92**
famous for its use-friendliness.



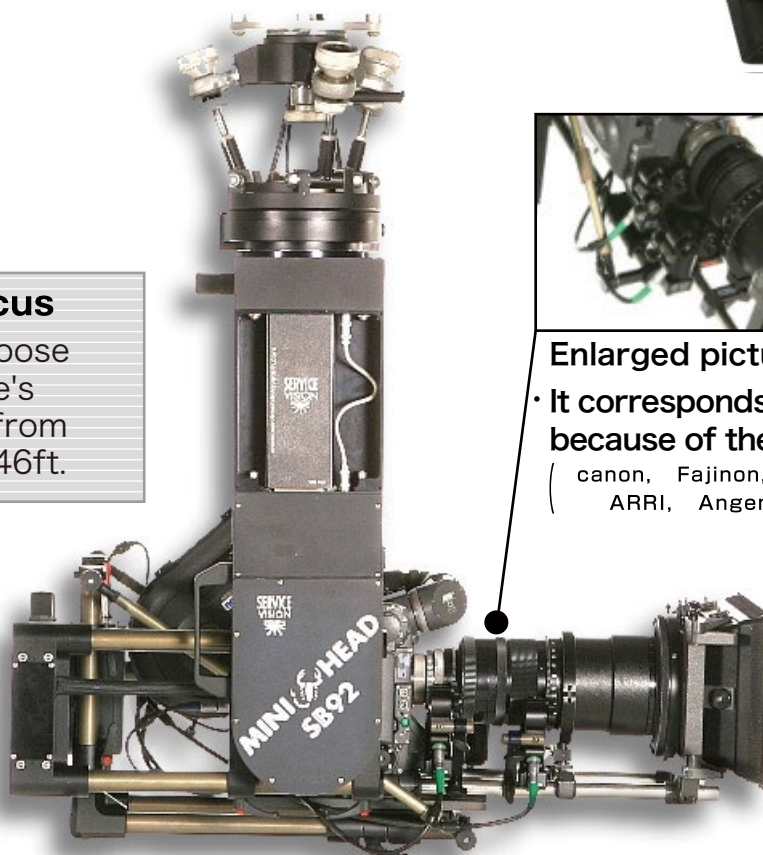
SB92-Focus

You can choose Akela Crane's arm reach from 72ft, 58ft, 46ft.



Enlarged picture of F.I.Z

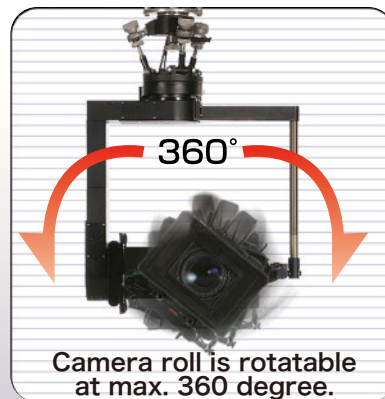
• It corresponds to various lens because of the external lens gear.
(canon, Fajinon, Panavision, ARRI, Angenieux, etc...)



MINI HEAD SB92

■ Technical Specifications

- Remote head weight: 16kg
- Camera's maximum weight: 30kg
- Rotation speed: 360 degree / 2 seconds
- Bank: max. 360 degree (vary with camera or film magazine)
- Adopted pan bar system
- AC100V or DC30V



SERVICE menu

■ Rental fee per a day

- A set of Mini Scorpio 3 Axis

.....¥120,000

■ Operation service

- A set of Mini Scorpio 3 Axis,
- 1 grip, 1 vehicle

.....¥170,000



Contact Grip109 tel.044-935-0567 fax.044-935-0568

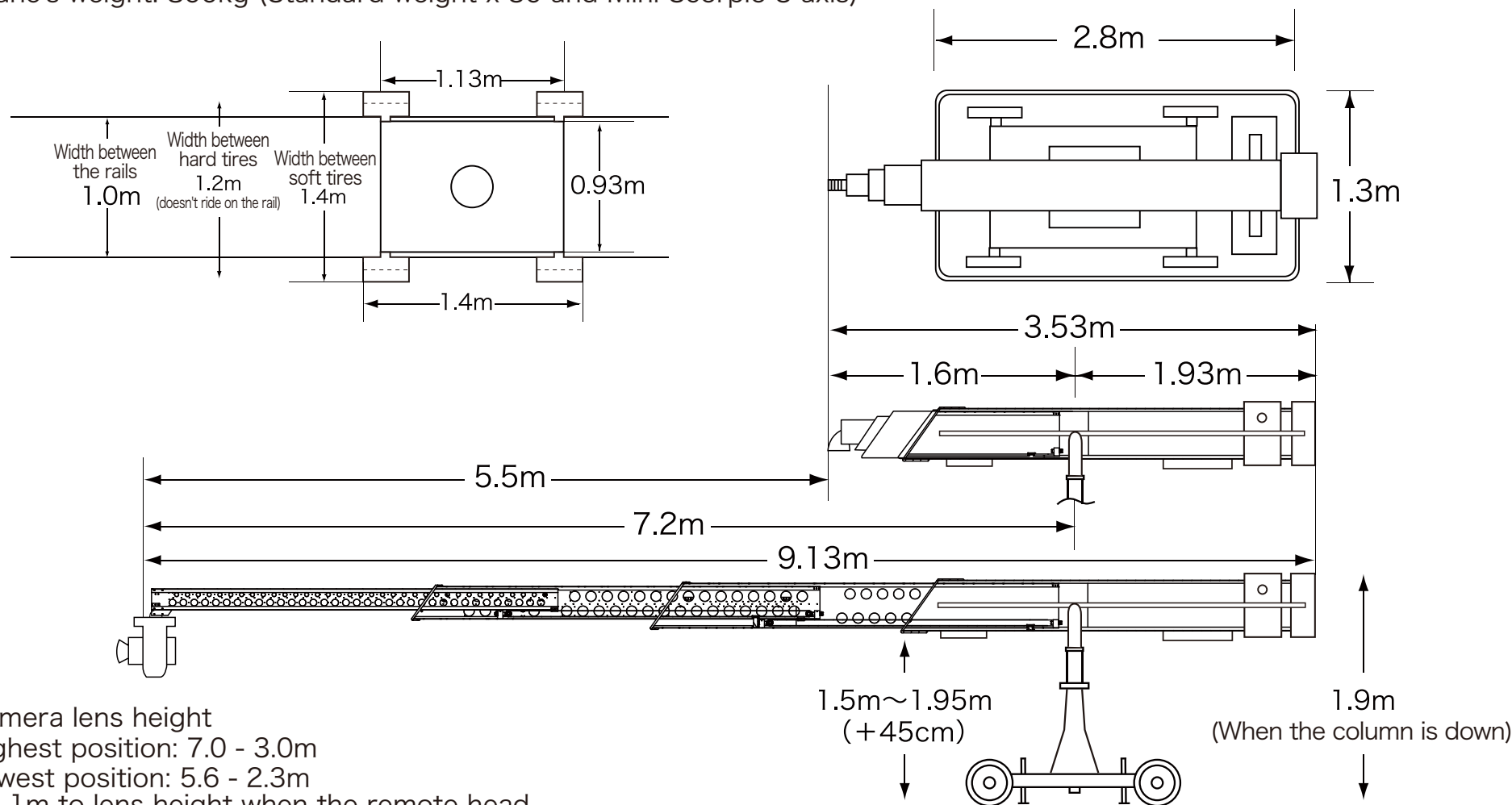
The Millennium24

Next Generation of Telescopic Crane

GRIP & EQUIPMENT
IMAGE STUDIO 100

Contact: 044-935-0567 (dedicated phone no. for Grip)
090-2538-0895 (contact person: Yonekubo)

- Arm stroke: 5.5m, back arm: 1.9m, head's maximum load: 90kg
Crane's weight: 800kg (Standard weight x 30 and Mini Scorpio 3 axis)



- Camera lens height
Highest position: 7.0 - 3.0m
Lowest position: 5.6 - 2.3m
*Add 1m to lens height when the remote head is mounted upside down.